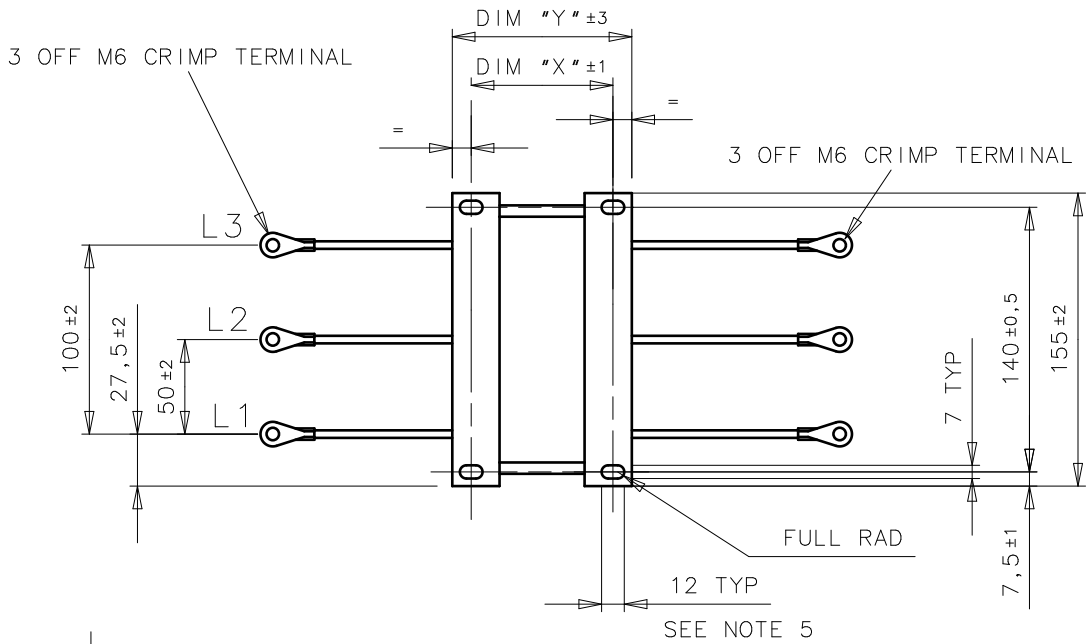
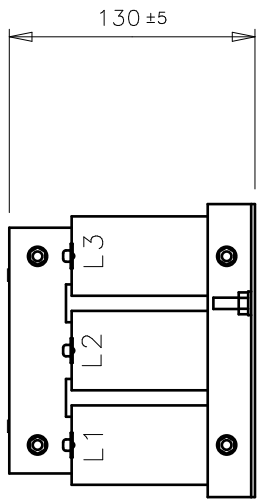
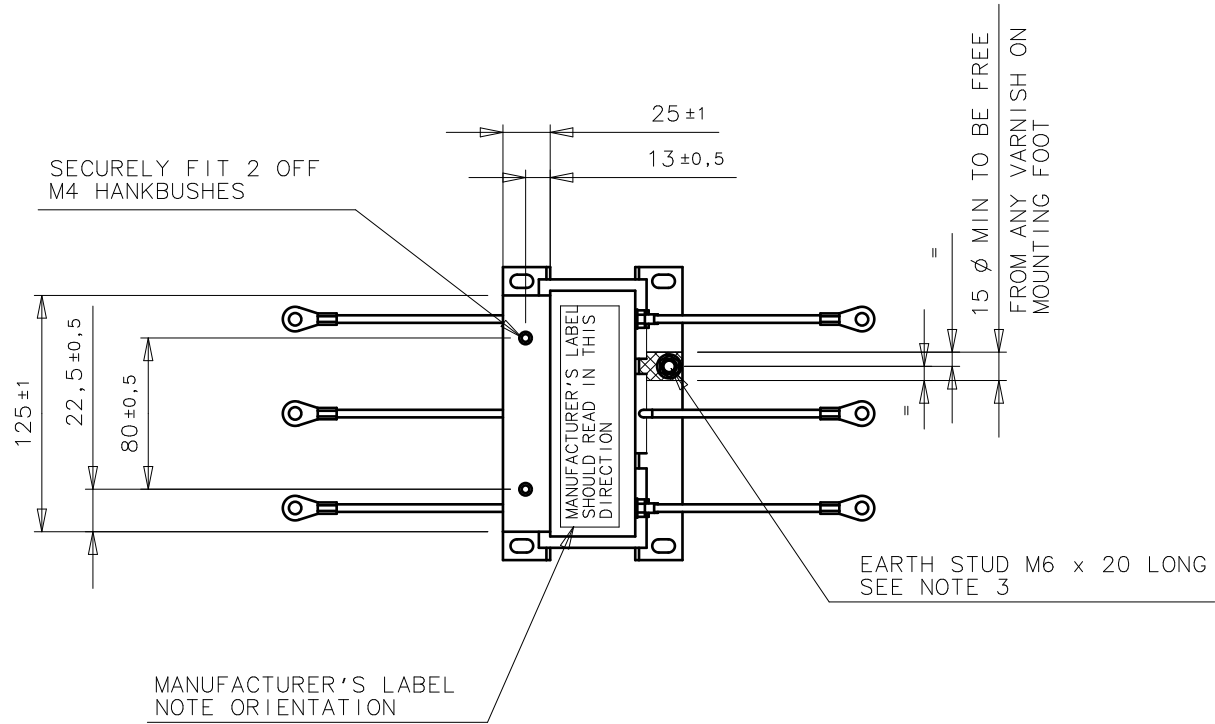


IA464213 ISSC 01MAY97

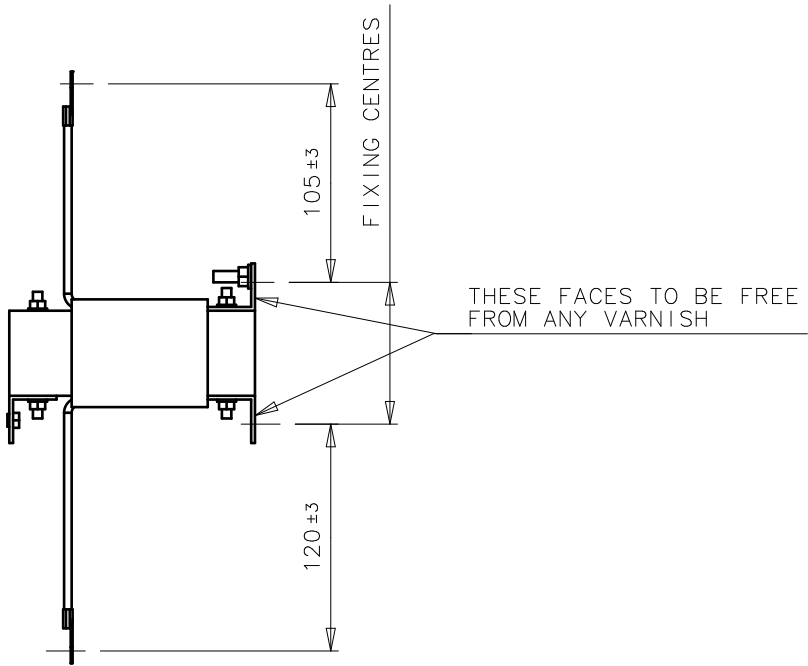
A
B
C
D
E
F
REDRAWN FOR IDEAS

PART NUMBER	CURRENT A.C.	DIM "X"	DIM "Y"	PUBLISHED CENTRES "X"	INDUCTANCE
CO057283	22A	75	95	75	900μH

SEE NOTE 7



- NOTE 1. ALL CRIMP TERMINATION FACES, WIRE ENDS AND EARTH POSITION TO BE FREE FROM ANY VARNISH.
2. FINISHED CHOKES MUST MEET WITH EUROTHERM DRIVES SPEC HL055928 WITH THE FOLLOWING MODIFICATIONS.
a) WINDINGS MUST BE IMPREGNATED (VACUUM).
b) RATING LABEL MUST INDICATE A.C. CURRENT, INDUCTANCE AND EUROTHERM DRIVES PART NUMBER.
3. EARTH STUD TO BE SELF CLINCHING TYPE, STEEL ZINC PLATED AND TO BE SECURELY FITTED. STUD TO BE FITTED WITH 1 STEEL PLAIN WASHER, 1 LOCK WASHER AND 1 NUT, ALL TO BE ZINC PLATED AND CLEAR PASSIVTED FINISH.
4. TERMINALS AND EARTH TO BE LEGIBLY AND CLEARLY MARKED AS INDICATED.
5. ALTERNATIVE SLOT SIZE CAN BE USED WITH EUROTHERM DRIVES ENGINEERING DEPARTMENTS APPROVAL.
6. ALL THREADED HOLES TO BE FREE FROM ANY VARNISH.
7. THE "PUBLISHED FIXING CENTRES" DO NOT AFFECT THE MANUFACTURE OF THE CHOKES, THESE CENTRES ARE FOR EUROTHERM DRIVES PRODUCT INSTRUCTION MANUALS,



© 2003 EUROTHERM DRIVES LTD./INC.

ISS	2	DATE	10DEC03	ECO	17950	DRN	PAW		MATERIAL	SEE DRAWING	DO NOT SCALE DIMENSIONS IN MM UNLESS OTHERWISE SPECIFIED		BS308/ANSI Y14.5M 82 BS3939/IEEE Std91 84		ELECTRONIC STORAGE DETAILS. I-DEAS PROJECT: std-mec_chk I-DEAS/INFOFLO DESCRIPTION chk_ac_3ph_22a_900uh	
									FINISH	SEE DRAWING	DRG SIZE A3 B	TOLERANCES SEE DRAWING	ENGINEERED PAW	TITLE CHOKE A.C. 3 PHASE 22A 900μH OUTLINE DRAWING		
											SCALE 1:4		CHECKED CC	DRAWING NUMBER CO057283		
													FIRST USED VARIOUS	SHT 1 OF 1		